

Solomon Practice Paper

Pure Mathematics 2I

Time allowed: 90 minutes

Centre: www.CasperYC.club

Name:

Teacher:

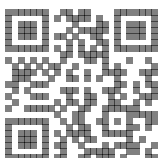
Question	Points	Score
1	5	
2	5	
3	9	
4	9	
5	11	
6	11	
7	12	
8	13	
Total:	75	

How I can achieve better:

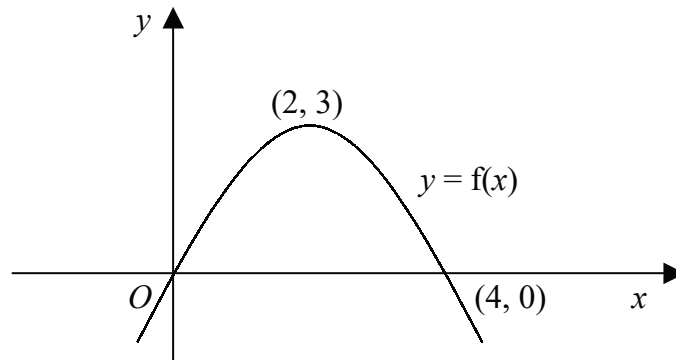
-
-
-



Last updated: *May 5, 2023*



3. Figure shows part of the curve $y = f(x)$ which meets the x -axis at the origin, O , and at the point with coordinates $(4, 0)$. The curve has a maximum point with coordinates $(2, 3)$.



Showing the coordinates of any turning points and any points where each curve meets the x -axis, sketch on separate diagrams graphs of

- (a) $y = |f(x)|$, [2]
(b) $y = f\left(\frac{1}{2}x\right)$, [3]
(c) $y = f(|x|)$. [4]

Total: 9

